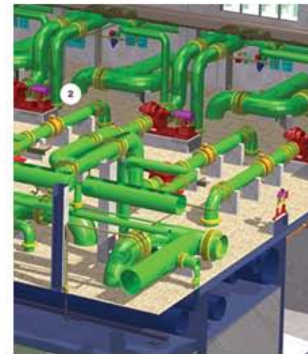


Bentley Geo Web Publisher V8i (SELECTseries 1)

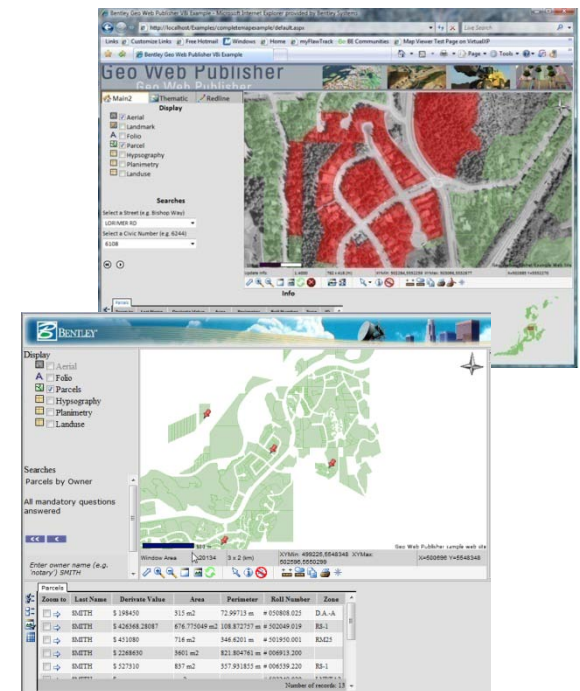


Challenges

1. Working with multiple disparate data sources
2. Performing manual ad hoc data publishing and distribution
3. Working with non geo-referenced databases
4. Having complex and costly desktop GIS products deployed for casual users and/or no GIS tools at all available for casual GIS needs
5. Not having a Web GIS deployed due to cost and complexity
6. Having geographical data locked inside the GIS department (not available for comments and/or editing outside of it)
7. Not being able to integrate geospatial data into enterprise systems

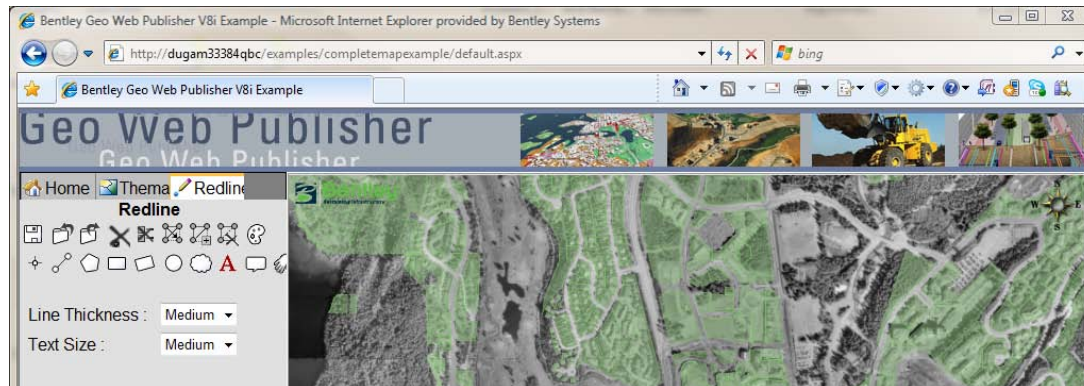
Value Proposition – User Benefits

- Integrate graphical data
- Integrate non-graphical data sources
- High performance publishing for a wide audience
- Web GIS applications - creation and administration:
 - Via easy-to-use tools for generating fully featured GIS web sites
 - Low cost of ownership, no development required
- 'Web 2.0' workflows
 - Mark-up, editing, and collaboration
- Enterprise integration
 - Web Services
 - Authorization

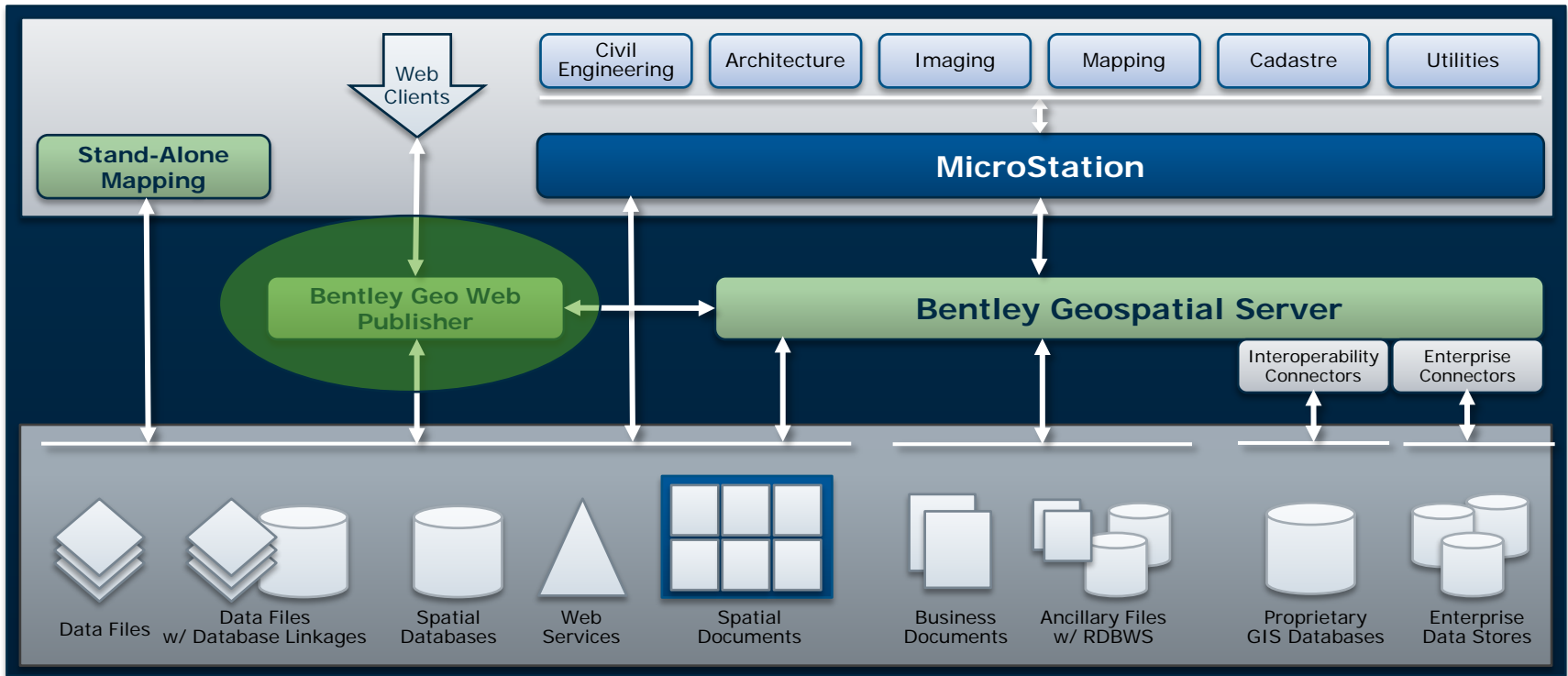


What is Bentley Geo Web Publisher?

- It is a Web GIS
 - Easy to implement, high performance
 - Brings together multiple data sources, and databases
 - Supports collaborative workflows
 - OGC compliant, WMS/WFS server
- Advanced tools for GIS Web applications creation and administration
- End user tools for map navigation, querying, analysis, reporting, mark-up, editing



Architecture

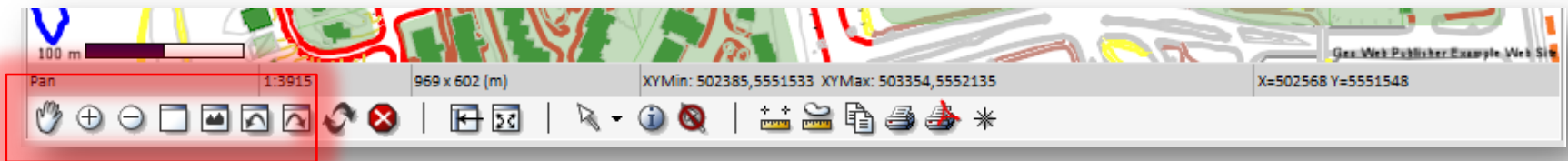


Bentley Geo Web Publisher is a Web 2.0 Application

- It easily supports the **data load** that comes with modern Web Applications
- It is not only about Web publishing, it is also about teams **doing** things **together** over the Web
- It supports the standards required for enterprise integration workflows

Navigation Tools

- Scale based display allows administrators to make sure users will see only relevant data at any zoom level
- Intuitive zoom tools help users navigate the map: zoom in, zoom window, view previous ... zoom previous, next
- Scale (zoom level) can be manually changed at any time
- Layers not available for a given zoom level are dimmed
- Frames can be moved and the map view can be maximized



Searching and Finding

- Usually the first task to be accomplished in a session
- Database integration is key here
- Administrators can set up workflow-oriented searches so that end users find what they are looking for easily
- Multiple search tools and options:
 - Free text
 - Guided question (minimum number of characters)
 - Chained question
 - Pick list

Searches

Parcels by Owner 1/1

Enter owner name (e.g. 'notary')

Searches

Select a Street (e.g. Bishop Way)

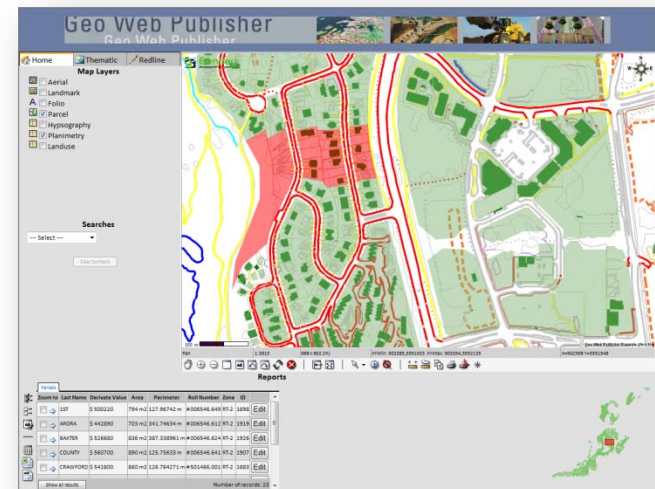
EAGLE DR

Select a Civic Number (e.g. 6244)

6124

Web-based Reporting

- Selecting elements
- Viewing an object's properties
- Viewing related objects' properties
- Hyper-linking to other resources
- Downloading data locally for additional work
 - .CSV
 - .xls
- Map and report
- Cartographic print



Report Results

Downloading .csv file

Downloading .xls file

Printing current report and map view

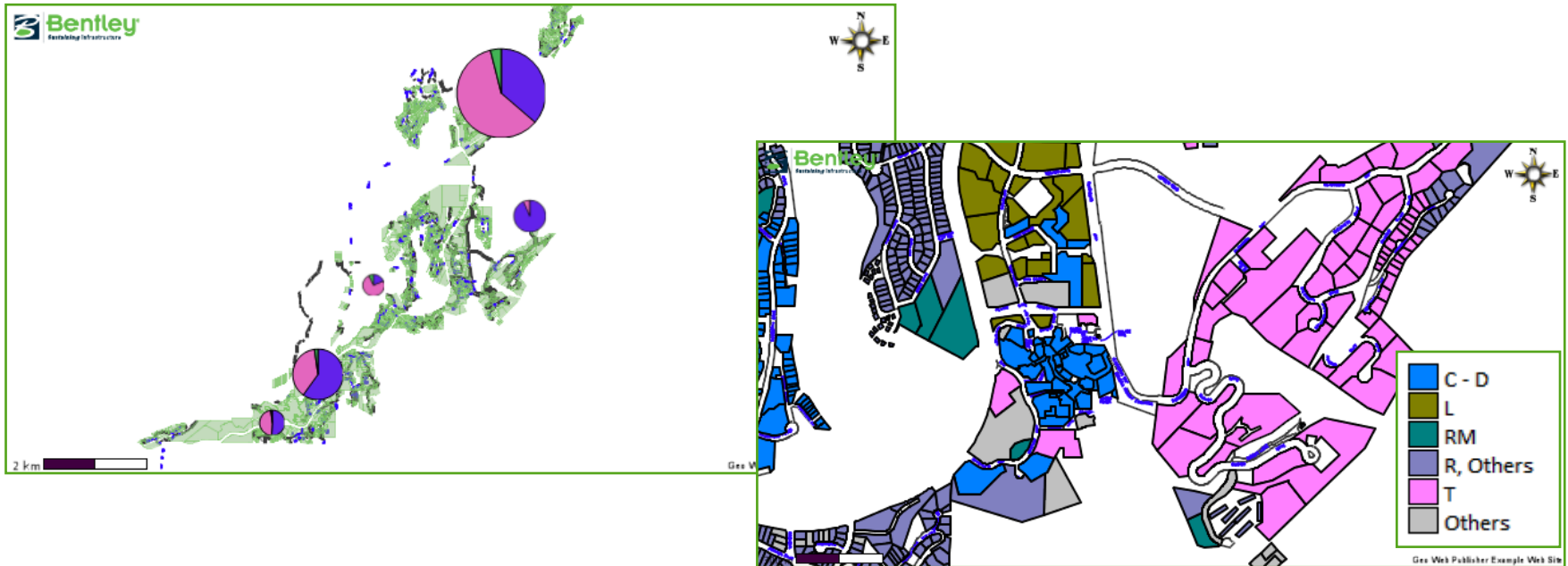
Viewing related objects' properties

Zoom to	roll_no	zoning	derived_value	area	Owner	
<input type="checkbox"/> →	006095.000	TA-4	6299370	9999	Resort Municipality of Whistler	<input type="button" value="Edit"/>
<input type="checkbox"/> →	503028.003	CC-1	2445660	3882	HEITZINGER	<input type="button" value="Edit"/>
<input type="checkbox"/> →	050883.001	CC-1	1852830	2941	CASSINO	<input type="button" value="Edit"/>

Navigation icons: Home, Back, Forward, Print, Refresh, etc.

Number of records: 18

Web Analysis



- Multiple analysis tools including:
 - Thematic mapping (unique values, equal range, intervals)
 - Pie charts defined from one property (proportional circle) or from man

Collaboration Tools

- Commenting
 - Mark-up files can be overlaid on top of maps, printed, saved, loaded and sent to colleagues
- Editing and updating properties
 - Properties can be edited from the report section with free text or pick lists
- Editing spatial layers of data
 - Simple point features or Oracle Spatial points-lines-polygons can be added or modified along with their properties

The screenshot displays a web application interface. On the left, there is a data table with the following columns: 'Zoom to', 'roll_no', 'zoning', 'derived_value', 'area', and 'Owner'. The table contains one row of data: '005146.981', 'TP-4', '1962450', '3115', and 'RUECKHAUS'. Below the table are 'Update' and 'Cancel' buttons, and a status indicator 'Number of records: 1'. On the right, a map shows a parcel highlighted with a red dashed circle. A red arrow points to this circle with the text 'Please check IDs'. The Bentley logo is visible in the top left corner of the map area.

Zoom to	roll_no	zoning	derived_value	area	Owner
<input type="checkbox"/> →	005146.981	TP-4	1962450	3115	RUECKHAUS

Number of records: 1

Please check IDs

Bentley Geo Web Publisher is...

- An out-of-the-box Web-based GIS
- It covers the spectrum of most commonly used GIS functionality
 - Finding assets
 - Reporting
 - Analysis
 - Editing
- It comes with tools for administrators that allow a fully functional Web GIS to be rapidly constructed